

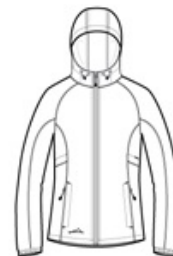


# Eddie Bauer® Women's Packable Wind Jacket. EB501

Wind was the inspiration for this compact layer. Plus, it packs down into its own logoed pocket, making it easy to carry wherever you go. Hood with locking draw cords for adjustability, contrast reverse coil zipper, underarm vents, front zippered pockets with packable right pocket, elastic cuffs and an open hem. Contrast Eddie Bauer logo on right hem. Made of 100% nylon.

### CARE INSTRUCTIONS

Secure all garment before laundering Machine wash warm delicate separately Use mild detergent rinse thoroughly Do not bleach Tumble dry low or for best result line dry Do not iron. Do not dry clean



front



back

### HOW TO MEASURE



#### BUST

Measure under the arm and around the fullest part of the bust with arms down, keeping tape horizontal.

### SIZE CHART

	XS	S	M	L	XL	2XL	3XL	4XL
Size	2	4/6	8/10	12/14	16/18	20/22	24/26	28/30
Bust	32-33	34-35	36-37	38-40	41-43	44-46	47-49	50-52

### COLOR INFORMATION

Please note: PMS code information is shown only when an exact match is available.



Adriatic Blue  
PMS 4161C



Black  
PMS BLACK C



Grey Steel  
PMS 7540C